



Oslofjord West

GRUISE GUIDE



Explore the wonderful coast of Norway. Take some days on a relaxing sailing cruise, or take a more adventures cruise, to see eagles and other wildlife. You will feel as an explorer.

Losna sailing will cruise most of the south of Norway.

We will be more than happy to create your experience in your vacation.

Losna Charter
Ballblomvegen 6b
2150 Årnes
ola@sy-losna.com
46547090



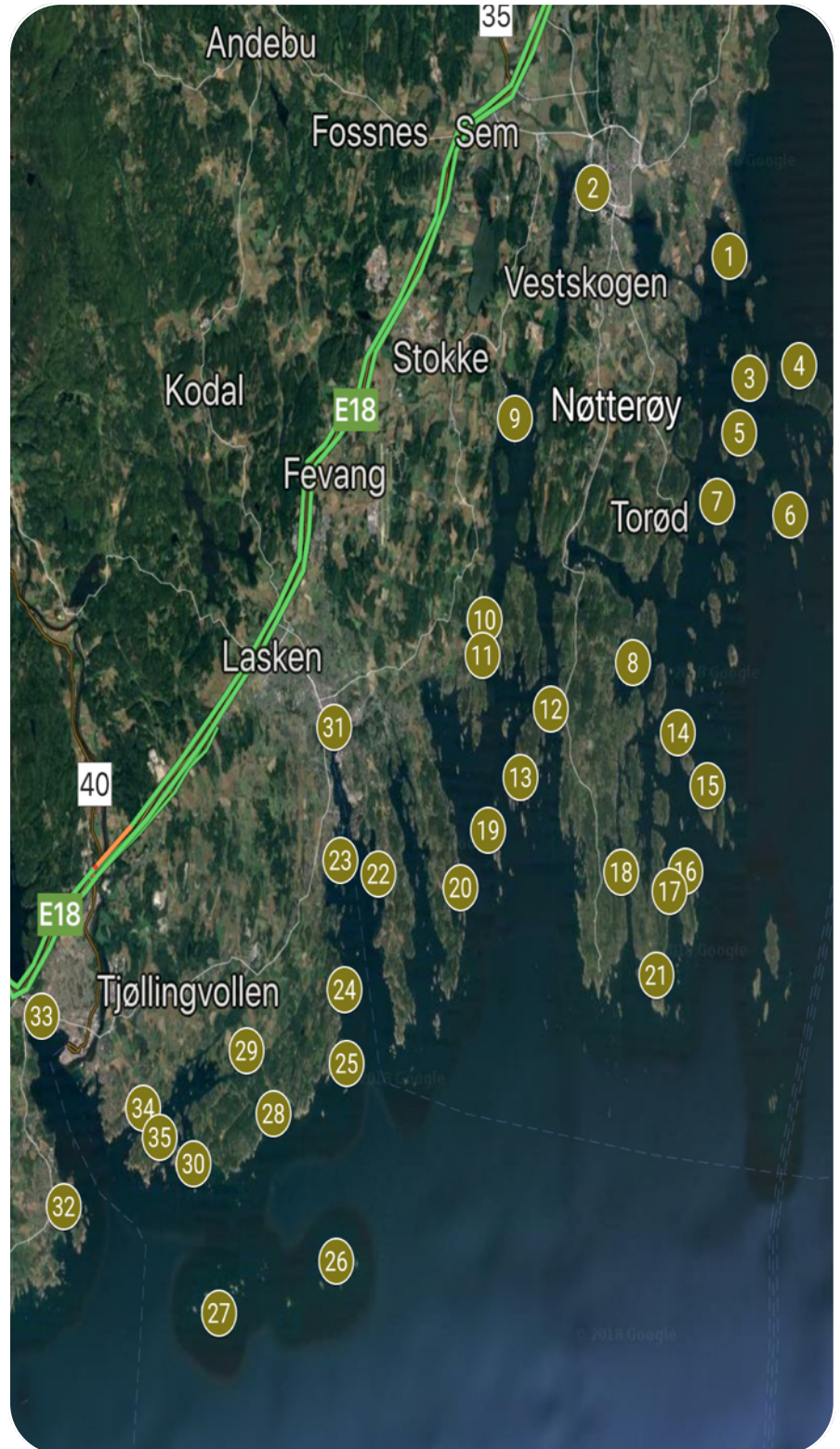


CRUISE DESTINATIONS

1. Torgeirøya
2. Tønsberg
3. Masseløy
4. Bolærne
5. Hvaløy
6. Hui
7. Lindholmen
8. Galten
9. Gåsø
10. Langøya
11. Sauholmen
12. Vakersholmen
13. Huibukta
14. Ildverket
15. Bustein
16. Sandøbukta
17. Krukehavn
18. Havna
19. Stauper
20. Tallakshavn
21. Uleholmene
22. Buerøya
23. Seilerøya
24. Håkavika
25. Kjerringholmen
26. Rauer
27. Svenner
28. Ula
29. Skogholmen
30. Sør i Ommane
31. Sandefjord
32. Stavern
33. Larvik
34. Ødegårdsbukta
35. Skutebukta



Losna
CHARTER



Visit harbors in the Norwegian fjords, and have a luxury yachting experience. A private sail cruise along the beautiful coast of Norway, you'll never forget.



Take friends on a wonderful sailing trip on a fjord with a lot of good food, or combine several days of sailing. Let us arrange your cruise to fulfill your dreams.

- One day trip to Bolærne (4) or Ildverket (14).
- Two days trip Torgeirsøya (1) and Tallakshavn (20).
- Three days trip to Hvaløy (5), Tallakshavn (20), and Gåsø (9).
- Six days to Ildverket (14), Kjerringholmen (25), Ula (28), Svenner (29), Sauholmen (11).
- Six days trip to Tallakshavn (20), Buerøya (22), Svenner (29), Kjerringholmen (25), Hui (6).



Torgersøy

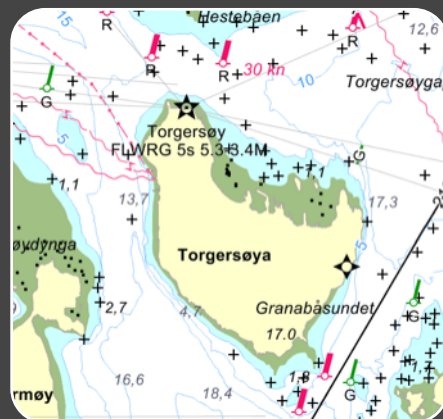
01



On the island there are also 15 cabins, the closed Torgersøy lighthouse with a protected bell tower and fog bell. There has been a settlement here from the 1700s until the early 1900s.

N59°14'39.8"N E10°29'48.3"

- Fishing
- Tranquility



Tønsberg Gjestehavn

02



Tønsberg is a medium-sized Norwegian city. Here are extra lively in the summer, and the pier is a gathering place for all. The harbor is well protected west of the canal bridge. The entrance to the west via the Tønsbergfjord is well-known. The same is the trail east, but boats higher than 3 m is dependent on the opening times of bridge. Tønsberg is a nice city, and also Norway's oldest, already mentioned in the year 871. The Slotsfjell rock is majestic over the city and the tower from 1888 is a landmark. The fortress, Tønsberghus from the 11th century, was the royal palace in the 1200s and 1300s, but was burned in 1503 by Swedish soldiers and rebellious farmers, and has not been rebuilt. The city center offers a varied array of shops, restaurants and cultural services.

N59°16'18.0" E10°23'44.9"

- Shops
- Restaurant
- Marked
- ATM
- History



Masseløy

03



N59°13'31.5" E10°30'37.7"

- Fishing
- Wildlife



The island is flat and elongated with many bays and coves with sandy beaches. With the exception of the tallest patches, it is covered with lush vegetation. There are three house ruins, stone farms and a number of clearing windows. Masseløy widely used for day trips, over night stay, and camping.

Bolærne

04



N59°13'2.4" E10°32'24.6"

- Shops
- Restaurant
- Beach
- History



Bolærne was released from military purposes in 2005 and has quickly become a popular recreation area in the Nøtterøy Archipelago. At Østre Bolærne there is a nice guest harbor, and a restaurant along with large areas for play and ball games. It is possible to go camping on the island. Bolærne was operational from 1916 to 1999. The area is secured, but you get a good insight into the size of the fort when walking around the island.

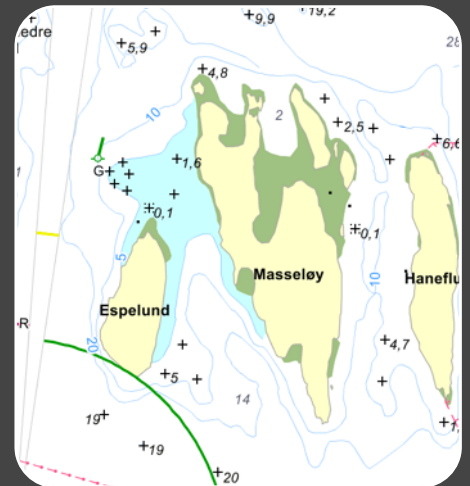
Hvaløy

05



N59°13'33.5" E10°30'37.1"

- Fishing
- Beach
- Wildlife



Hvaløy is close to the inner line within Bolærne. The north side is a popular area. East of the lighthouse you can moor to land on depths around 2 m. There is a small pier you can use. Admission is hassle-free, but the bays are long-lived, so most boats must moor against the pebbles further out. You are slightly exposed to strong northern winds. Here are slippery pebbles, shallow bays with sandy beaches, and grassy fields and a tall pine forest within. Here it is great to set up a tent,

Hui

06



N59°10'38.6" E10°32'16.2"

- Beach
- Fishing
- Wildlife



Hui is quite open to the eastern side of Bolæren. Both Lille and Store Hui, and especially the strait between offers good depth and fine harbor conditions even for larger boats when the wind is not too strong. You are exposed to winds especially from the north and south through the strait. Long-side mooring in the strait is preferable where it is deep enough for it. There are bolts on both sides of the strait.

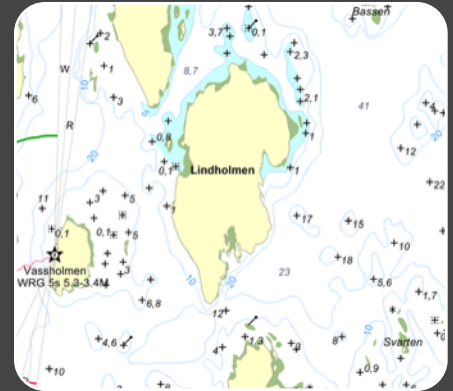
Lindholmen

07



N59°10'41.6" E10°28'50.8"

- Beach
- Fishing



Lindholmen is well protected from the islands east of Nøtterø, and should not be confused with Lindholmen west of Tjøme. North on Lindholmen there are beautiful little sandy beaches well protected. There are good mooring possibilities against the rocks. 2-3 m deep in most places, and sand and clay on the ocean floor. You are slightly exposed to heavy wind, especially from the north.

Galten

08



N59°8'28.2" E10°25'15.2"

- Shop - Hotell - Spa
- Restaurant
- Country house for the royals



The bay south of Mørøy is well protected and here are some nice little islets and shaers you can moor. Galten is the area with beautiful rocks, and the most idyllic little coves you can imagine. It is relatively shallow around the island, so you should approach with caution. The bay south of Mørøy is well protected and there are some nice little islets and shaers.

Gåsø

09



Foto www.oslofjorden.com

Just outside Melsomvik in Tønsbergfjorden we find Gåsøya and Gåsøykalven. Both islands are free areas and popular places. Admission around the islands is straightforward, but there are shallow. On the north side of Gåsøykalven is a quai with a good depth you can moor. Concrete quai on the east side is faint and should not be used.

N59°12'22.5" E10°20'35.2"

- Fishing
- Beach
- Wildlife



Langøya

10



Langøya is a flat and elongated island west of Veierland. There is a the beautiful cultural landscape with grazing, cultivated fields, and some forests. Between Langøya and the mainland there are excellent anchoring conditions. The bottom is sand and clay, so anchoring is good. Here you can easily feel the feeling of being in a small lake. You can moor to Sauholmen (11) as well, or the bay in between the islands.

N59°10'19.9" E10°19'51.0"

- Beach
- Fishing
- Wildlife



Vakersholmen

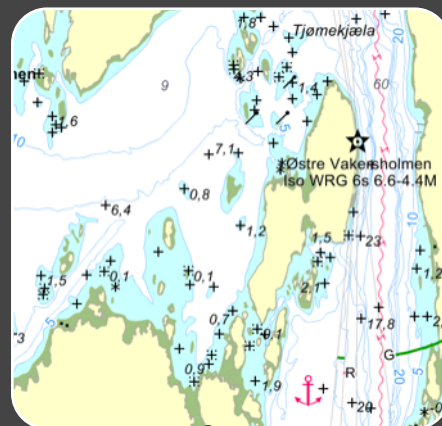
12



Vakersholmen is an idyllic and sheltered harbor where you can choose between several islets and shafts to rest. Grisholmene is perhaps the most popular. It is deep along the rock, and plenty with bolts. It is cool and good under most conditions, and the access from Tjømekjælla is hassle free.

N59°7'42.2" E10°22'27.7"

- Fishing
- Beach
- Wildlife



Huibukta

13



On Hui or Hudøy is the holiday colony and landing ban in July. The crests and headlands of bay of Hui, are open to visitors. The special eastern side of Geitungholmen is a rather sheltered and popular harbor. It is possible to get access from the south between Bukkholmen and Kuskjær.

N59°6'42.5" E10°21'13.3"

- Beach
- Fishing
- Wildlife



Ildverket

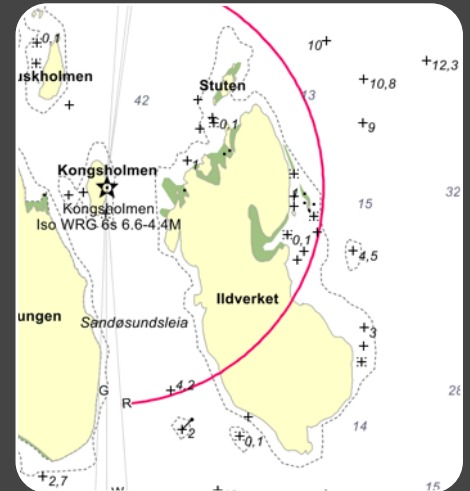
14



At the island of Ildverket we find one of Oslofjordens finest beaches in the bay with the appropriately name Paradise Bay. There are several nice places to moor against the rocks to the north, west and east, of Ildverket, but none of them are completely protected from all wind conditions. In the bay to the northwest and in the middle of the island's west side there are floating pear and depths from 1 to 3 m. In Paradise Bay on the east side, it is shallow.

N59°7'24.8" E10°27'31.7"

- Shops
- Beach
- Geocaching



Bustein

15



Bustein is located just north of Krukehavn on Hvasser and Store Færder. It is Vestre Bustein which offers nice seaports and tempting sandy beaches. In the strait against Østre Bustein is perhaps safest to most winds, but none of the options are well protected if it really would be bad weather. One should only stay here when the weather is good.

N59°6'26.7" E10°29'14.9"

- Wildlife
- Anchoring
- Beach



Sandøbukta

16



Sandø is located across the Strait of Krukehavn (17) on Hvasser. Sandøy Bay is on the north side of the island with a large and fine sandy beach. It is shallow in the bay, but you can moor to the rocks at the west side with depths ranging from 1-2 m. Most people prefer anchoring in the bay. It is a good holding on a sandy bottom.

N59°5'15.5" E10°27'43.5"

- Beach
- Anchoring
- Wildlife



Havna

18



Havna at Tjøme is a lively harbor with hotel and restaurant, and a large guest harbor. The harbor is sheltered and safe in all kinds of weather, but do not expect peace at 23:00. Access through Røssesundet north or south. From the north, the bridge with 14 m free height prevents the arrival of larger sailboats, Enter from south. It is shallow just outside the floating pier, but the shears are both visible over the water and marked with 2 stakes. At the hotel you can enjoy food and drink, or play miniature golf and tennis. At the harbor there is a grocery store, several smaller shops and most of the facilities in a guest harbor.

N59°5'12.5" E10°25'9.6"

- Shops
- Geocaching
- Wildlife
- Restaurant
- Golf



Tallakshavn

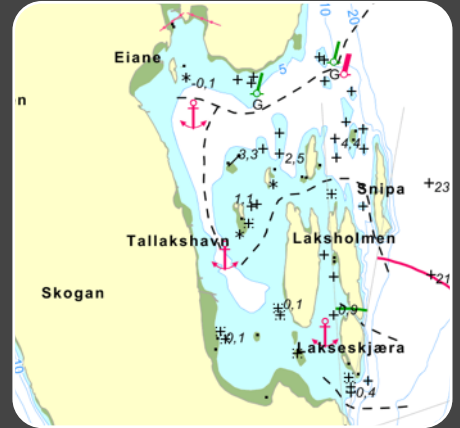
20



Just north of Tønsberg Tønne, we find Tallakshavn conveniently located. This is a safe and good harbor of all kinds of weather. The entrance from the north is marked with stakes, but you may as well use the entrance north or south of Laksholmen. At least if one is not deeper than 2 m. If you wish to be a resident, opportunities are many and good. Especially north of Havneholmen and Laksholmen.

N59°4'54.2" E10°18'41.8"

- Beach
- Camping
- Geocaching
- Wildlife



Uleholmene

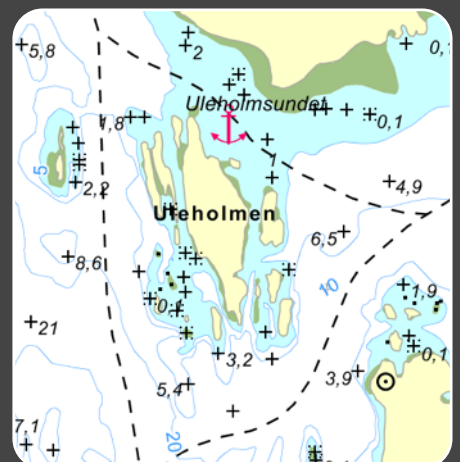
21



In the seaport south of Hvasser lies the islets Kløvningen and Uleholmene. Here is the free area and nice fortune possibilities in good and stable weather. The outside area is notorious for rough sea due to current and shear. The round little bay north of Kløvningen is easily accessible. Around the Uleholm, it is much more unclean, and you should approach the islands with care. It is surprisingly deep in many places between the beautiful rocks northwest of the Uleholm, and even large boats can moor long side to the rock.

N59°3'40.5" E10°26'10.5"

- Anchoring
- Beach
- Wildlife



Buerøya

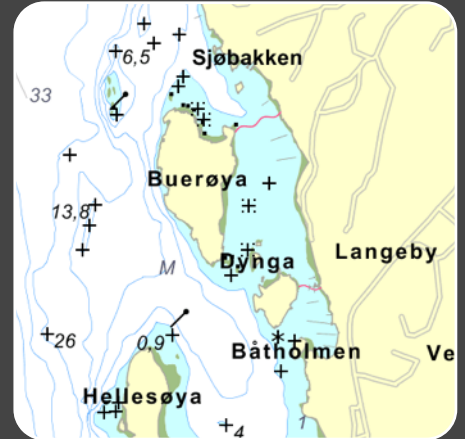
22



Vikerhavn is an old fishing port located as an outpost on the south west corner of Asmaløy, directly to the outer Oslo fjord. The landscape in Vikerhavn consists of little vegetation and is unprotected to the sea. The rustic fishing port is protected by a powerful mole, and within the pier there are also guest harbor and boats.

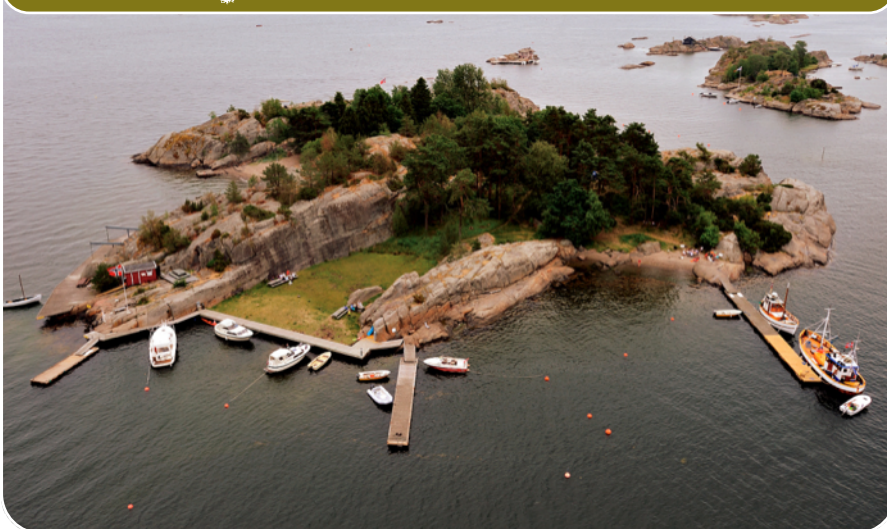
N59°5'29.5" E10°13'35.0"

- Beach
- Wildlife
- Geocaching



Seilerøya

23



Seilerholmen is the middle of three islands called Tredelene which lies on the west side about halfway in the Sandefjordsfjord. The island is owned by Sandefjord Sailing Association and is well-organized for visitors. Admission from the fjord is fine as long as you are aware of the shear in the southeast. There are floating piers along the entire north side and in the southwest. Depths range from 1 to 2.5 m.

N59°3'48.0" E10°58'43.6"

- Beach
- Fishing



Håkavika

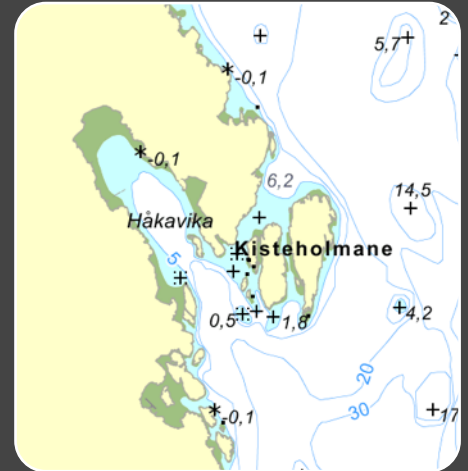
24



There are many fine sandy beaches in the Sandefjordsfjord. In Håkavika on the west side there are several, and also both further inward and beyond the fjord. Here is a part of the cottage settlement, but in the northeast of the week we find a good addition and a diligently used harbor with floating peers and roks to moor to. At the brewing plant there are depths from 1.5 to 3 m.

N59°7'32.2" E10°56'46.8"

- Beach
- Fishing
- Wildlife
- Geocaching



Kjerringholmen

25



Martaholmen in the southwest and Mølholmen in the northeast lies as a protective wave breaker for Kjerringvik. It is especially Martaholmen which has been used as its own small port. Simplest insertion is through Koksundet. North and South from here are also fine. From the south you are near the Martaholmen until you pass by 1.8m the ground. At Marta Holmen is a welcoming small sandy beach surrounded by beautiful rocks.

N 59° 54.579 , E 10° 43.933

- Beach
- Fishing
- Wildlife
- Geocaching



Svenner

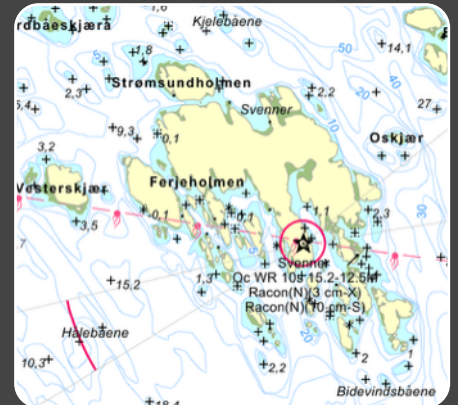
27



Svenner is often a boat owner's favorite port. Especially the locals know to make use of this amazing harbor; They know that the entrance is not as difficult as it seems. You can lie in the bay in the north and between the shores in the southwest, but it is Fyrhavna which is best in changing weather. Not far from Svenner is Rauer (26), another great place.

N58°58'9.2" E10°8'57.7"

- Beach
- Fishing
- Wildlife
- Geocaching



Ula

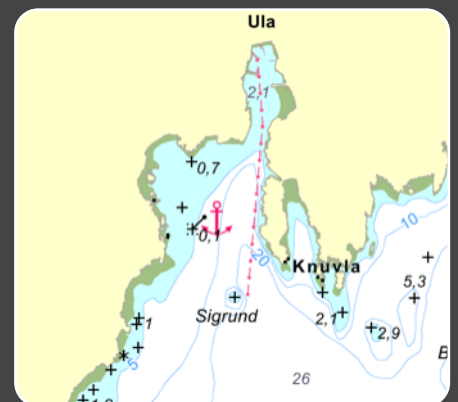
28



In the 19th century, Ula was a well-known place where the pilot, Ulabrand (Anders Jacob Johansen 1815-1881) had his work. Ula has a population of approx. 200 residents, but this is multiplied in the summer.

N59°1'12.5" E10°10'55.5"

- Fishing
- Geocaching
- Lazy days



Skogholmen

29



Skogholmen is an islet within Vestfold and is nearby to Tjøllingholmen and Refsholtøya. The inlet to Skogholmen is narrow and shallow. Enter this fantastic site with extreme caution.

N59°2'16.3" E10°10'1.8"

- Beach
- Fishing
- Wildlife



Sør i Ommane

30



Sør i Ommane is a good place to wait for the southerly gale to calm. Even in really bad weather you are safe. Popular spot on sunny days for locals.

N59°0'38.3" E10°7'46.4"

- Shops - Bakery
- Restaurant - Pub
- Marked - and more.
- ATM
- Liquor store



Sandefjord

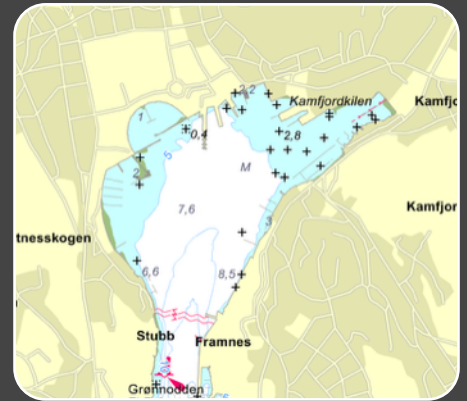
31



Sandefjord Guest Harbor is centrally located in the harbor with restaurants and museums "Southern Actor" as the closest neighbor. This is the port for those who like late nights and partying.

N59°7'20.5" E10°13'43.3"

- Shops
- Restaurant
- Marked
- ATM
- History



Stavern

32



Stavern is one of the most popular harbours in southern Norway. Learn about naval history. The small town of Stavern will double in citizens in the summer months.

N58°59'51.1" E10°2'40.5"

- Shops
- Restaurant
- Marked
- ATM
- History



Larvik

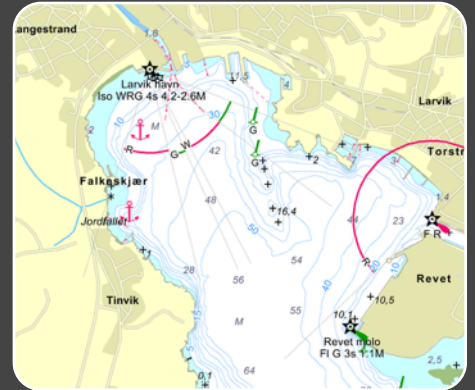
33



The Larviksfjord is no more than 3 nautical miles, and the city certainly deserves a visit. The guest ports are not one of the largest. Vadskjæret marina is located just below the center, and on the east side when entering the fjord. Fritzøe is a new shopping center with associated guest harbor west of the city center at the exit of Farriselva. Admission in the fjord is hassle free.

N59°2'43.8" E10°1'30.7"

- Shops
- Restaurant
- Marked
- ATM
- History



Ødegårdsbukta

34



The Larvik Sailing Association in Ødegårdsbukta is a nice harbor with guest spots on the floating peers, or you can be allocated any vacant places upon request to the harbour master. if it is full you can anchor in the middle of the bay.

N59°1'28.4" E10°5'51.8"

- Beach
- Fishing
- Geocaching
- Shops



Skutebukta

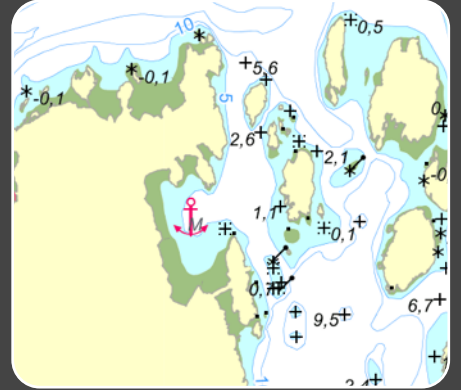
36



Malmøya is located on the eastern side of the inlet of Larviksfjorden. On the west side of the island is a boat dock, a name that promises good anchorage, and there are several islets that where you can moor your boat.

N59°1'2.0" E10°6'24.2"

- Beach
- Geocaching
- Wildlife



Losna CHARTER



Losna CHARTER

Ballblomvegen 6b
2140 Aarnes



POWERED BY NATURE

