



Oslofjord East

CRUISE GUIDE



Explore the wonderful coast of Norway. Take some days on a relaxing sailing cruise, or take a more adventures cruise, to see eagles and other wildlife. You will feel as an explorer.

Losna sailing will cruise most of the south of Norway.

We will be more than happy to create your experience in your vacation.

Losna Charter
Ballblomvegen 6b
2150 Årnes
ola@sy-losna.com
46547090



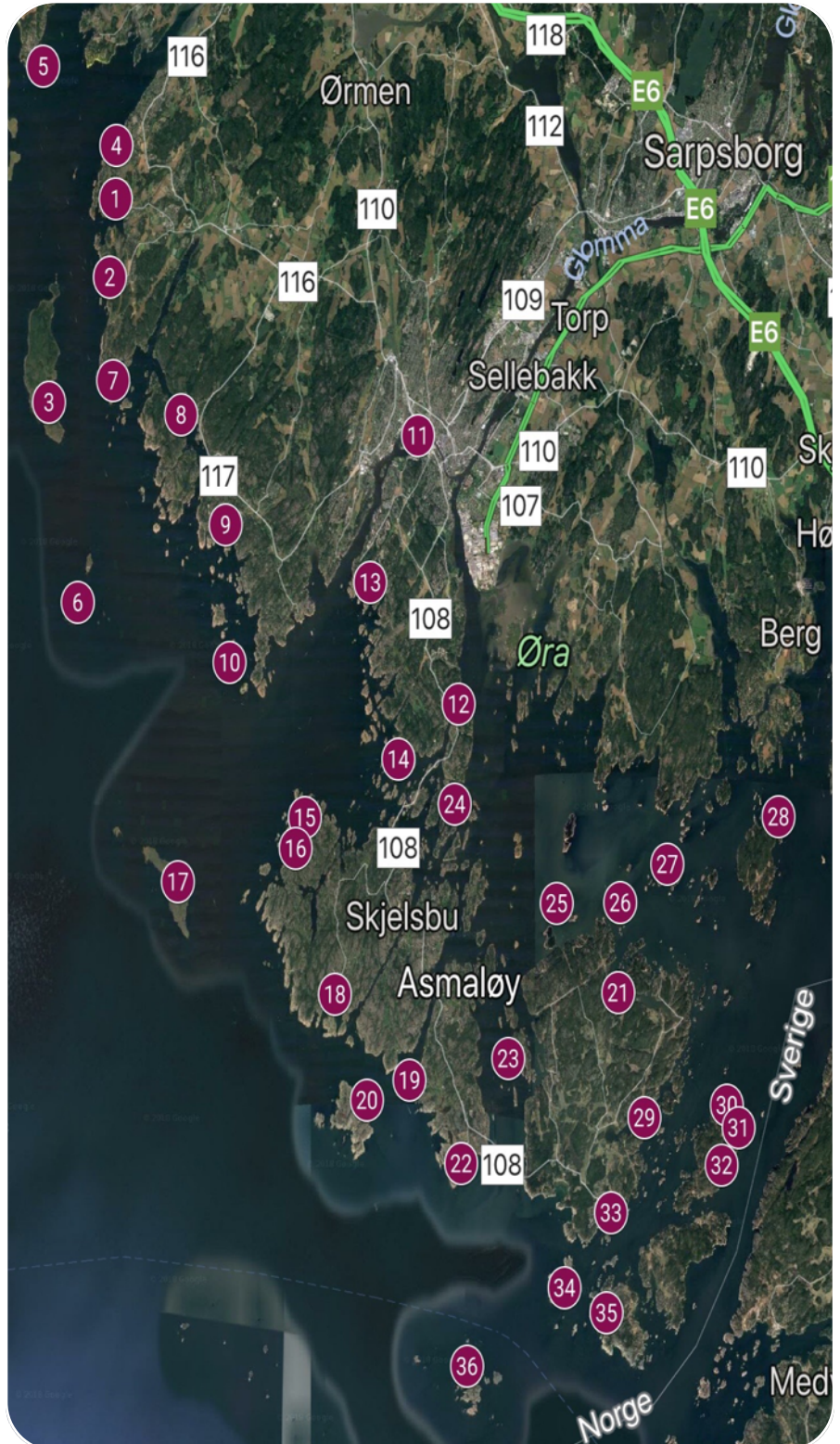


CRUISE DESTINATIONS

1. Skjæløy
2. Engsviken
3. Rauer
4. Saltnes
5. Teipa
6. Søndre Missingen
7. Risholmen
8. Hankø
9. Slevik
10. Flatskjæra
11. Fredtikstad
12. Tangodden
13. Enhuskilen
14. Arisholmen
15. Fredagshølet
16. Papperhavn
17. Søstrene
18. Utgårdkilen
19. Brattestø
20. Akerøya
21. Terneholmen
22. Vikerhavn
23. Filetassen
24. Furuholmen
25. Stamholmene
26. Damholmene
27. Kjeppingen
28. Singleøya
29. Holtekilen
30. Tordenskjoldbukta
31. Brattholmen
32. Tresvika
33. Skjærhalden
34. Lauer
35. Rognhavn
36. Tisler



Losna
CHARTER



Visit harbors in the Norwegian fjords, and have a luxury yachting experience. A private sail cruise along the beautiful coast of Norway, you'll never forget.



Take friends on a wonderful sailing trip on a fjord with a lot of good food, or combine several days of sailing. Let us arrange your cruise to fulfill your dreams. Do you do geocaching? Why not combine geocaching with sailing. Find caches on remote islands.

- One day trip to Enhuskilen (13) or Terneholmen (21).
- Two days trip Utgårdkilen (18) and Filetassen (22).
- Three days trip to Hankø (8), Akerøya (20), and Damholmene (26).
- Six days to Hankø (8), Vikerhavn (22), Skjærhalden (33), Holtekilen (29), Tangodden (12).
- Six days trip to Risholmen (7), Papperhavn (16), Tisler (36), Skjærhalden (33), Terneholmen (21).



Skjæløy

01



Skjæløy is a small gust harbour not far from Hankø. Rent a bike and explore the area.

N59°16'19.6" E10°44'24.0"

- Shops
- Restaurant
- Wifi



Engelsviken

02



Engelsviken is an old community built around the fishing industry. Here more shrimp fishermen have their starting point. There is a fish restaurant, convenience store, fish shop, hairdressing salon and campground. The area is built with housing. In summer, the number of residents increases greatly in Engelsviken as there are many cabins in the area.

N59°15'2.4" E10°44'1.7"

- Shops
- Restaurant
- Fish marked



Rauer

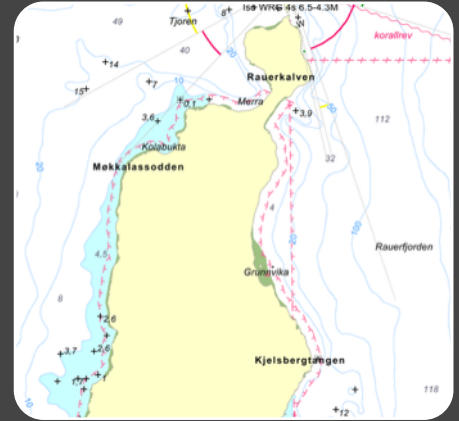
03



In 2007, the island was made available to the army's hunter command. The northern tip is open to certain general traffic, while the rest of the island is still a military area without universal right of travel. Use anchor in the bay and dinghy to go to shore.

N59°14'36.0" E10°42'19.1"

- Fishing
- Wildlife



Saltnes

04



Saltnes has got its name from the salt extracts that took place on Saltholmen hundreds of years ago. Salt extraction later evolved into fishing and today there are about ten fishing bays on the island. These arches are now used as a cottage. In the whaling era about a hundred years ago, many emigrated from Saltnes. Some married abroad and returned with their new wives. There are many houses from the whaling stage, along the "Whaling Road». These houses are large and magnificent, which can tell a little bit about how well paid the whalers was.

N59°17'12.6" E10°44'26.5"

- Shops
- Restaurant



Teipa

05



N59°18'20.3" E10°41'43.0"

- Shop
- Beach



Behind the islet, Denmark in Rygge, we find one of the finest places along the coast for those who like to swim. Keep well clear of the islet, Denmark where it is shallow, and be aware of the Lønndommen in the middle of the bay. Anchoring is good in sand and clay. Southerly winds can make it uncomfortable. It is possible ashore via Taralden or Teibærholmen.

Søndre Missingen

06



N59°10'15.4" E10°42'58.4"

- Beach
- Fishing
- Wildlife



The missions consist of Nordre Missingen, Søndre Missingen with Ovnskjær and some smaller islands and shards in the southeast, Missingskjær (Storeskjær, Rundeskjær and Lave Skjæret) in the southeast and the reason Tyta farthest to the south.

The bedrock of the islands consists of a Roman-conglomerate conglomerate.

Risholmen

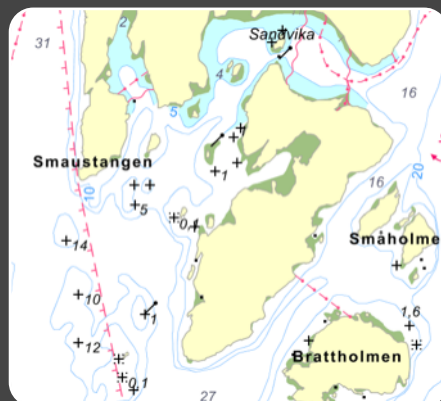
07



From the sea it looks like a plain archipelago island. However, if you go to Risholmen outside Fredrikstad, you get a garden experience without the same. Boaters are also welcome on foot in the plant collection, which contains more than 100 species of bear trees and 130 different rhododendron bushes. The park areas were brought by the Astrup brothers mother Heddy Astrup in 1952.

N 59° 54.493 , E 10° 43.515

- Amazing garden
- Beach
- Fishing



Hankø

08



At the ferry dock on Hankø lies the red painted Sailer Broa built in 1883 as part of Hankø bath. After arriving, follow the trail up to Hankø Fjord Hotell & Spa which was built in 1877. Turn left between the tennis courts and you arrive at the old stable for riding horses built around 1900. The road to the right of the stable leads to Hankø Square - one of the island's two small farms. Turn left at the barn and in the next left turn to the right along the power line. Cross the stream and turn left in the northeast direction towards Karibukta. Along the trail you can spot some of Hankø's deer if you are lucky. Continue on the path and turn left and you end up at the hotel, across from Seilerkroa and Bloksberg, the old country house of the royal family up in the mountain, now owned by Princess Märtha Louise and Ari Behn.

N59°12'54.5" E10°47'7.4"

- Shop - Hotell - Spa
- Restaurant
- Country house for the royals



Slevik

09



Welcome to the Slevik Boat Association Guest House. Water and electricity are available at the pier.

N59°11'36.7" E10°48'24.7"

- Shops - Bank - Post Office
- Restaurant - Hotel - Museum
- Cinema - Theater and more.
- Harbour Charge 500,-



Flatskjøera

10



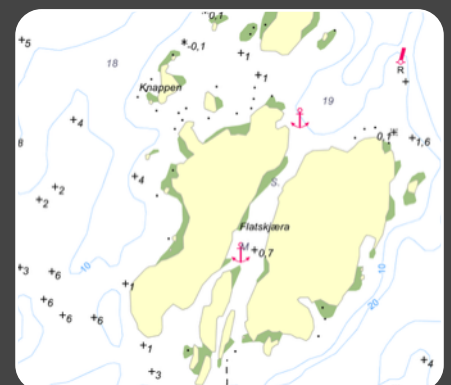
This harbor is good to resort to because of bad weather, you do not want to round the southern tip of Strømangenangen - an area where the sea often rises as a result of onshore winds and the outflow of Glomma's western run.

Entrance: From the north. Hold the port for the strike

Mooring system: Flat skirt consists of two relatively large islets, and it is in the sound between these that you find the good anchorages for smaller boats. On the north side of the eastern part of the island you can also land.

N59°9'34.9" E10°48'34.8"

- Shops - Bank - Post Office
- Restaurant - Viking Museum
- Fram Museum - Kon Tiki
- Harbour Charge 250,-



Fredrikstad

11



Warmth is often used as a keyword when Norwegians are asked to describe Fredrikstad. This mostly refers to the inhabitants, who are known to be friendly, open and humorous. Fredrikstad is a city with deep historical roots. It's home to one of the best-preserved fortress towns in Scandinavia.

N59°12'52.4" E10°55'44.2"

- Shops - Bank - Post Office
- Restaurant - Hotel
- Cinema - and more.



Tangodden

12



Follow the river Glomma from Fredrikstad, and you will soon find the inlet to Kjøkøy strait. Moor at the pier at Tangodden or Kjøkøy Marina and go geocaching on Kjøkøy.

N59°8'58.9" E10°57'1.6"

- Shops
- Geocaching
- Beach



Enhuskilen

13



Foto www.oslofjorden.com

As early as 1916 a Recreational area was established at Enhuskilen. There was a restaurant with winecellar and more than 2000 visitors in a weekend. Today the area is a camping site. Along with Arisholmen (14) and other local islands and islets this bay covers the sunny and beautiful area west of Fredrikstad.

N59°10'33.0" E10°53'24.1"

- Shops
- Beach
- Geocaching



Fredagshølet

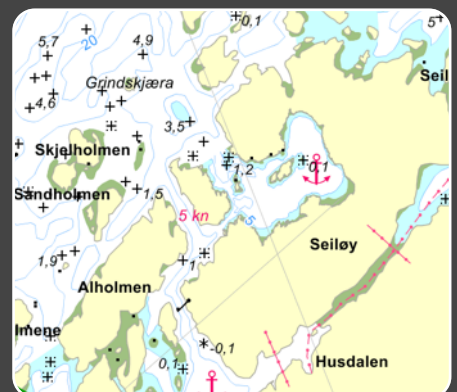
15



Fredagshølet is a very popular spot for boater in Norway. Along with Papperhavn (16) this Islets cover th north western parts of the island group of Hvaler.

N59°7'14.2" E10°51'19.0"

- Wildlife
- Anchoring
- Beach



Søstrene

17



North and South Sister farthest out at sea west of Hvaler Islands. There is no harbor that is safe in bad weather, but it is an exciting place when the weather is good. You can lie at anchor between the islands or to land in several places. North on Søndre Søster there is a magnificent sandy beach. In good weather, moor against the rock on either side of the beach. The islands are partly volcanic mountains, like the Missings and Rauer further north. Here are pastures for sheep and shrubs and small, unblocked trees. It is hilly and unavailable in many places.

N59°6'16.9" E10°46'24.5"

- Beach
- Anchoring
- Geocaching
- Wildlife



Utgårdskilen

18



There is a guest breeze on the eastern side of the wedge. Behind a molo. No facilities, one has to cross over to the west side to find them.

At the end of July Utgårdskilen charity association will host the Sjøbufestival together with, Hvaler Jager- og Fiskeforening and other clubs. There will be sale of food, toys for the children, concerts and other facilities.

N59°4'37.7" E10°52'16.1"

- Shops
- Geocaching
- Wildlife



Akerøya

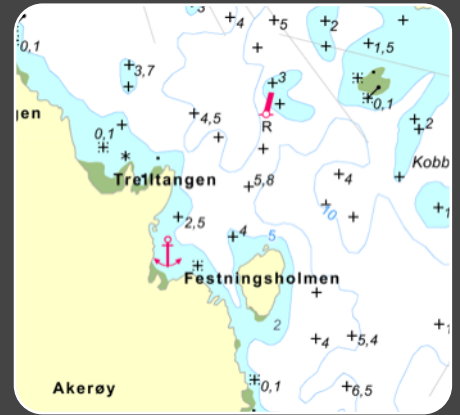
20



Akerøya is an island in Hvaler municipality in Østfold. East of Akerøya is a small island, Festningsholmen, with Akerøy fort from the 17th century. In saga time named the island Saltholmen, after some shallow polls where it was mined sea salt. Akerøya has also received two excellent sand volleyball courts. The courts are made by local Hvaler youngsters. Every year the island hosts a volleyball tournament named "Island Open". Not far is Brattestø (19).

N59°3'5.7" E10°53'30.3"

- Beach
- Camping
- Geocaching
- Wildlife



Terneholmen

21



Well protected behind rows of islands lies Terneholmen. Here you are well hidden just outside the southwest tip of Røsholmen. The island is small but with excellent harbor conditions. There is easy access west of Røsholmen and Saltholmen. It is best to add to the west and north, where it is about 3 m depth to land. Here you are rarely alone, and for good reason. It is quiet in all kinds of weather and deep enough for most boats.

N 59° 54.579 , E 10° 43.933

- Anchoring
- Beach
- Wildlife



Vikerhavn

22



N59°2'10.4" E10°56'58.3"

- Shops
- Wildlife
- Geocaching



Vikerhavn is an old fishing port located as an upost on the south west corner of Asmaløy, directly to the outer Oslo fjord. The landscape in Vikerhavn consists of little vegetation and is unprotected to the sea. The rustic fishing port is protected by a powerful mole, and within the pier there are also guest harbor and boats.

Filetassen

23



N59°3'48.0" E10°58'43.6"

- Beach
- Fishing



Filetassen is a nice little islet in the strait between Kirkøy and Asmaløy. On the north side are several small well-protected coves with good mooring possibilities. It is 3-4 m deep in the bay and well anchorage in the clay bottom, besides bolts in the mountain several places. It is the safest call north from between Kjerringholmen and Styve. The harbor is somewhat exposed to wind from the north.

Furuholmen

24



Furuholmen is located in the Fredrikstad neighborhoods for a beach shed. Here there are many places, so you should follow the map carefully. The bend in the south is lunatic in many cases, but it is mostly shallow to land and only 3-1.8 m of water to anchor. The anchor holding is good.

N59°7'32.2" E10°56'46.8"

- Beach
- Wildlife



Stamholmene

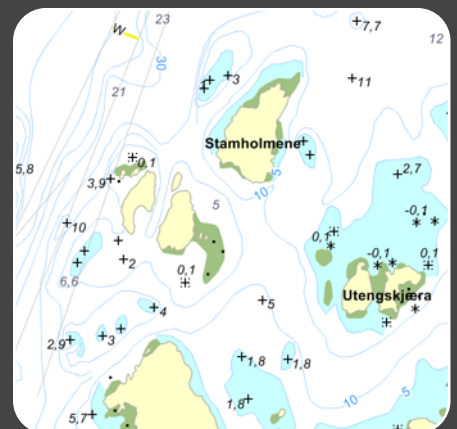
25



Stamholmene together with Damholmen (26), east of Stamholmene, and Kjeppingene (27) north of Damholmen, are islands widely use by locals. Be aware of shallow areas.

N59°6'4.5" E11°2'50.3"

- Beach
- Wildlife



Singløya

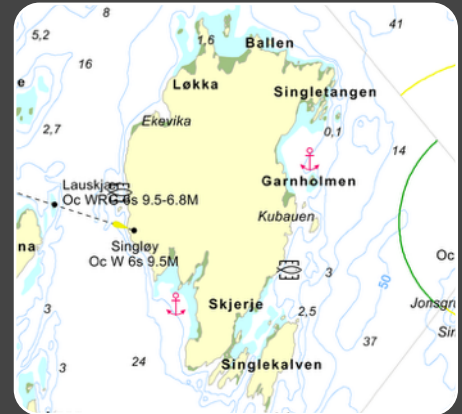
28



Singløya is the northernmost of the islands in Hvaler municipality in Østfold. It is located north of Kirkøy in the Singlefjord. Singløya had its own school until 1939 and it is still resident on the island.

N59°6'45.9" E11°8'41.0"

- Beach
- Fishing
- Wildlife
- Geocaching



Holtekilen

29



Holtekilen is a good harbor on the eastern side of Kirkøy. Lay your anchor in quite firm clay bottom. The entrance from the fjord north of Nordre Sandøy is unproblematic. Helleskilen is also a good harbor. Here you can lie on the sway or towards the mountain south of the strait. The landscape is flat and open with farmland and forest. It is shallow inside the wedge, but along Koltorpneset can moor against the rocks. Here are beautiful sandy beaches.

N59°2'54.6" E 11°3'36.5"

- Fishing
- Geocaching
- Lazy days



Tordenskjoldbukta

30



On the northern tip of Nordre Sandøy there are a number of small coves which are popular among the boaters. Makø is a sheltered harbor with bathing area, beach, mountains and forests. Tordenskjoldbukta is one of the most visited nature ports in the Hvaler archipelago. Near by you will find Brattholmen (31) and Tresvika (32).

N59°3'9.2" E11°6'42.1"

- Beach
- Fishing
- Wildlife
- Geocaching



Skjærhalden

33



In summer, Skjærhalden is a popular holiday resort. In Christmas, Easter and several times in summer, the ferry goes to Strömstad with the ferry Veslø II. In Skjærhalden, a bust of known Norwegian-Canadian Henry A. Larsen was raised in 2000, which grew up on the neighboring island of Herføl.

N59°1'4.9" E11°2'30.4"

- Shops - Bakery
- Restaurant - Pub
- Marked - and more.
- ATM
- Liquor store



Lauer

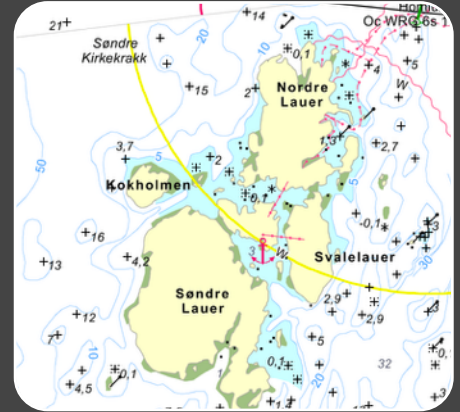
34



Lauer is a group of small and tidy islands south of Kirkøy in Hvaler municipality. The port of Nordre Lauer is partly a free port and partly fixed berths. Frihavnen is currently located in the southern part of the harbor.

N59°0'16.5"E11°0'51.5"

- Beach
- Fishing
- Wildlife



Rognhavn

35



Rognhavn is located on the west side of Herføl on Hvaler. This is a beautiful area for small and large swimming pools. Lawn, toilet, grill and garbage disposal.

The harbor is lunatic but still close to the open sea.

Sailing from south or north along the eastern part of Fløyholm, approximately to the 59th degree. From here you go southeast towards the brews in the heart of Kaffebukta. At the bottom of the bay it is 1-3 meters deep.

Mooring system: A private gangway is set up for day visitors. Some mooring bolts.

N58°59'47.3" E11°2'22.5"

- Beach
- Fishing
- Geocaching



Tisler

36



N58°59'14.5" E10°57'10.9"

- Beach
- Fishing
- Wildlife



Tisler is an archipelago that belongs to the municipality of Hvaler in Østfold. The archipelago consists of several islands that have been inhabited by up to 30 people. Tisler and Herføl are the last scans in Norway we observe before crossing the national border to Sweden. Herføl is the last of the Hvaler islands in the south-west, and Tisler is the second last outpost against the Skagerrak at Norwegian side. The last is the island of Heia.

Losna CHARTER



Losna CHARTER

Ballblomvegen 6b
2140 Aarnes



POWERED BY NATURE

