



Inner Oslofjord

CRUISE GUIDE



Explore the wonderful coast of Norway. Take some days on a relaxing sailing cruise, or take a more adventures cruise, to see eagles and other wildlife. You will feel as an explorer. Losna sailing will cruise most of the south of Norway.

We will be more than happy to create your experience in your vacation.

Losna Charter
Ballblomvegen 6b
2150 Årnes
ola@sy-losna.com
46547090

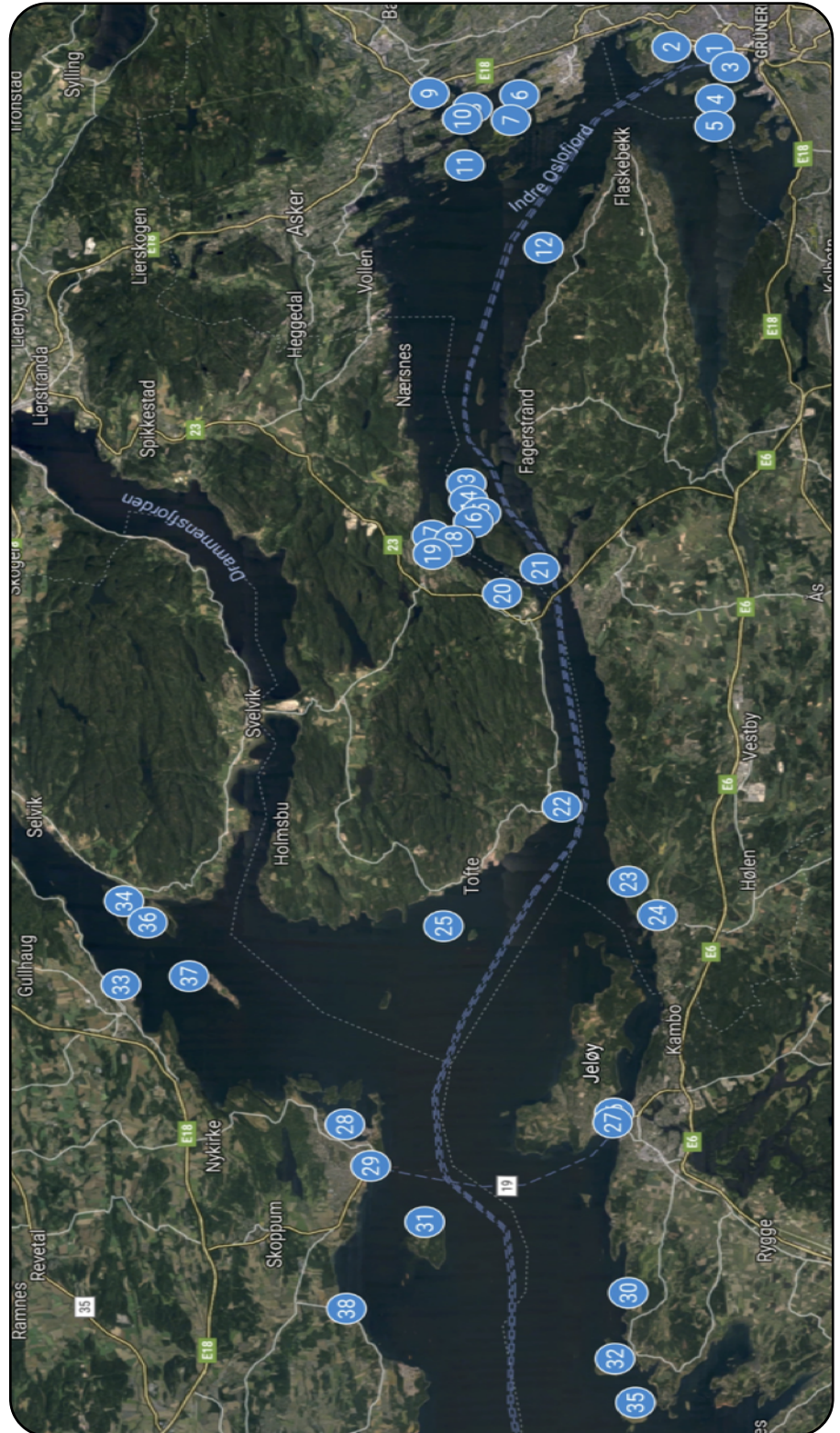




CRUISE DESTINATIONS

1. Aker Brygge (Oslo)
2. KNS
3. Rivierhavnen Kro
4. Gressholmen
5. Langøyene
6. Torvøya
7. Grimsøya
8. Saraholmen
9. Sandvika
10. Borøya
11. Middagsbukta
12. Steilene
13. Bjørnehuebukta
14. Dragsund
15. Håøybukta
16. Tåjebukta
17. Hjelp
18. Raudholmene
19. Sætre
20. Sandspollen
21. Oscarsborg
22. Filtvedt Restaurant
23. Kjøvangen
24. Son
25. Rambergholmen
26. Moss Gjestehavn
27. Kanalen
28. Horten
29. Horten Gjestehavn
30. Evjesund
31. Bastøy
32. Eldøy
33. Holmestrand
34. Kommersøya
35. Eldøy
36. Bjerkøya
37. Langøya
38. Åsgårdsstrand

Losna
CHARTER



Visit harbors in the Norwegian fjords, and have a luxury yachting experience. A private sail cruise along the beautiful coast of Norway, you'll never forget.



Take friends on a wonderful sailing trip on a fjord with a lot of good food, or combine several days of sailing. Let us arrange your cruise to fulfill your dreams.

- One day trip to Dragsund (14) or Oscarsborg (21).
- Two days trip Oscarsborg (21) and Sandspollen (20).
- Three days trip to Langøyene (5), Sandspollen (20), and Sandvika (9).
- Six days to Oscarsborg (21), Rambergholmen (25), Horten (28), Evjesund (30), Middagsbukta (11).
- Six days trip to Sandspollen (20), Filtvedt Restaurant (22), Kommersøya (34), Ramberholmen (25), Oscarsborg (21).



Aker Brygge (Oslo)

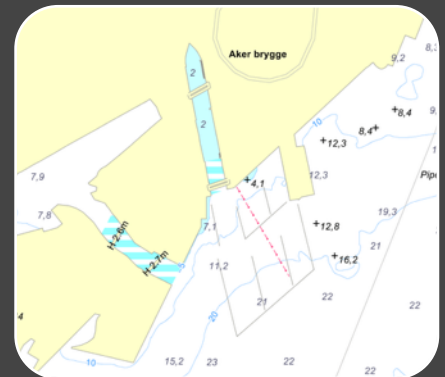
01



Oslo is the capital and the most populous city in Norway. It constitutes both a county and a municipality. Founded in the year 1040, and established as a kaupstad (*trading place*). Visit the Vigelands park, Akershus fortress or the viking museum. Aker brygge is located in the city centre

N 59° 54.493 , E 10° 43.515

- Shops - Bank - Post Office
- Restaurant - Hotel - Museum
- Cinema - Theater and more.
- Harbour Charge 500,-



KNS (Oslo)

02



Just a boat trip from the city centre, there is KNS harbour (**Royal norwegian sailing association**). It is also where you will find viking museum, Kon Tiki museum (Thor Heyerdahl cross the pacific in this straw boat). And other marine museums.

N 59° 54.579 , E 10° 43.933

- Shops - Bank - Post Office
- Restaurant - Viking Museum
- Fram Museum - Kon Tiki
- Harbour Charge 250,-



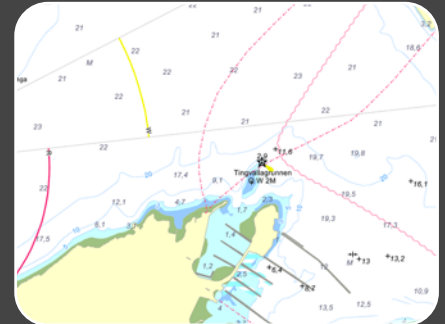
Rivierhavnen Restaurant 03



Rivierhavnen restaurant located at Hovedoya is a restaurant popular for their sea food. The menu is not set and vary from day to day. Hovedoya is one of many island near Oslo. There is ruins from an old monestary dated as early as 1147.

N 59° 53'58.3", E 10° 44'7,6"

- Restaurant
- Monestary ruins
- beach



Gressholmen 04



Gressholmen housed Norways first airport from 1926 to 1938. Now it it used by Oslos residents only for recreation. It is the same with Langoya south of Gressholmen.

N 59° 52'58.3", E 10° 43'30,3"

- Restaurant
- Recreational area



Sandvika

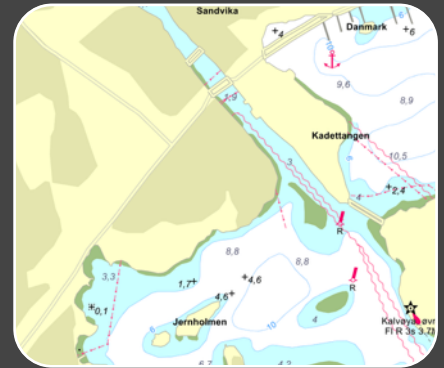
09



Sanvika is a suburb to Oslo. Stay a night and use the new facilities opening in 2018. You will find shopping senters, movie theater and beach.

N 59° 53'14", E 10° 31'46"

- Restaurants
- Movie theater
- Shopping center, Bank
- beach



Middagsbukta

11



Recreational area. Stay the night on midsummers eve. The bay are filled with boats. You can even walk from boat to boat from one island to the other.

N 59° 51'58,5", E 10° 32'33"

- Recreational area



Dragsund

14



Dragsund is a good place to stay overnight. You can expect to see eagles high over the island. Do not expect to be alone. Many local sailors use the area.

N59°42'25.2" E10°33'26.8"

- floating peer
- beach
- Wildlife



Håøybukta

15



Håøybukta is a good place to stay overnight. You can expect to see eagles high over the island.

N 59° 51'58,5", E 10° 32'33"

- floating peer
- Moor against the rocks
- beach
- Wildlife



Sætre

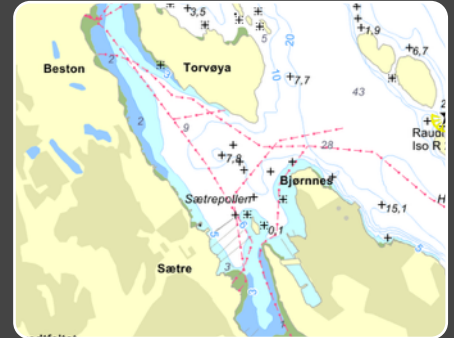
19



Sætre is a good place to shop and fill up tanks.

N59°41'4.2" E10°31'59.9"

- Restaurants
- Shopping center
- beach



Sandspollen

20



Sandspollen is a popular mooring bay for weekend boaters. Moor against the rocks, or use anchor. This bay is good shelter for wind from any direction.

N59°40'0.1" E10°34'43.1"

- Moor against the rock
- beach
- Wildlife



Oscarsborg

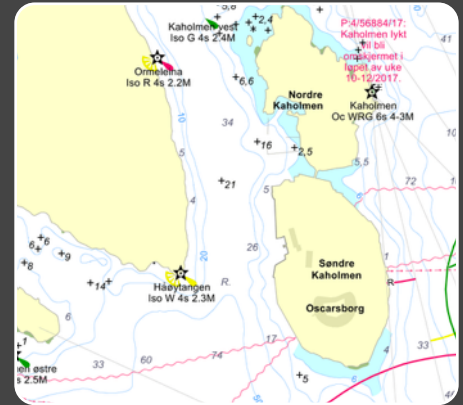
21



Oscarsborg Fortress is ideal for events, courses and conferences, tourists, boating enthusiasts, families with children and people who are interested in culture and history. Various cultural events are held at the fortress throughout the year, from concerts and opera performances to small, local events.

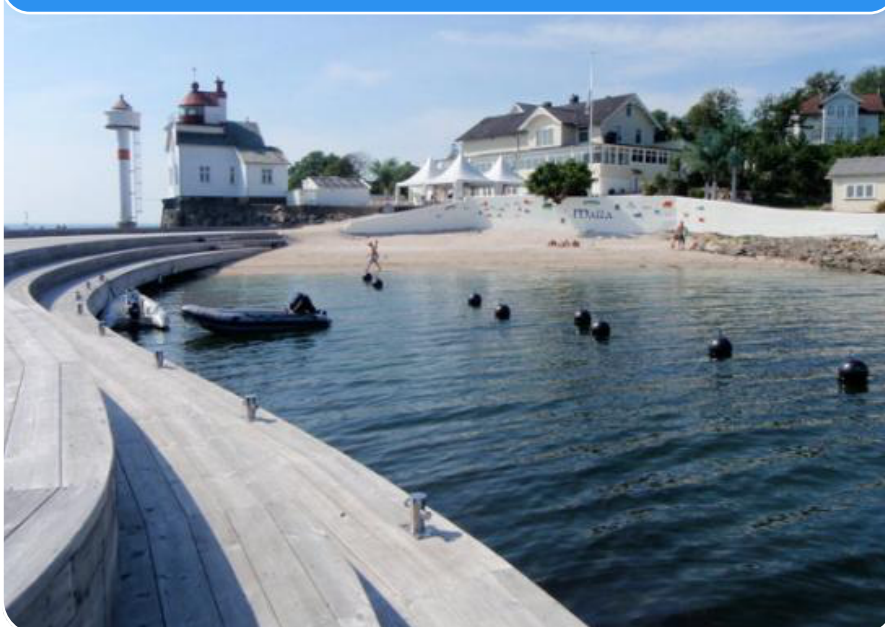
N59°40'37.6" E10°36'14.5"

- Restaurants
- Wildlife
- beach
- War History



Filtvedt (Villa Malla)

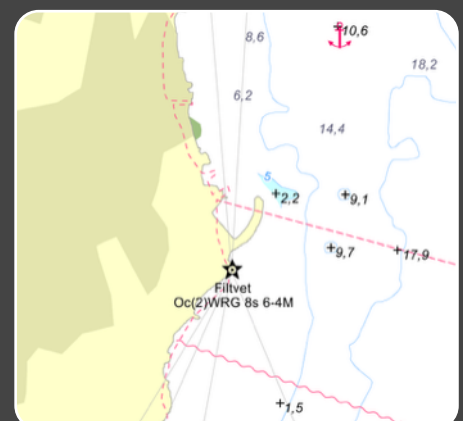
22



In the evening, the big Arab lights are lit and we fire in the fireplace, creating an indescribable atmosphere that needs to be experienced! Outside there are two large terraces on a different level, everyone is welcome to find a table in the sun or in the shade of a palm tree. The kids can run freely and maybe take a walk in our famous ice cream bar that stays up every day throughout the summer.

N59°34'19.7" E10°37'5.7"

- Restaurants
- beach



Son

24

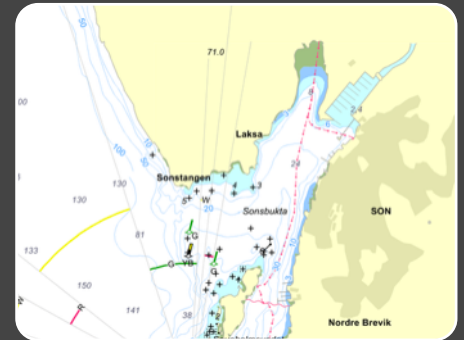


The story of Son goes back 100 years back in time. The place started as a place with housekeepers and beachers who fed on load work, floating and logging. In 1650 there lived about 200 people in Son.

The story of Son shows Son as its own customs office in 1604. The background was increased international trade in exports of ice blocks and wooden loads, shipbuilding and boat repair.

N59°31'27.2" E10°40'59.3"

- Restaurants
- Shopping center
- beach



Ramvikholmen

25



Tofteholmen, Ramvikholmen and Vealøs Holmene are the remains of the old Hurum volcano. The islets are part of the Tofteholmen nature reserve, which means that you should be careful about interfering with nature. Holmene has a colony of stone cobbles.

N59°31'3.8" E10°32'10.1"

- Beach
- Wildlife



Moss Gjestehavn

26



N59°26'18.9" E10°39'11.0"

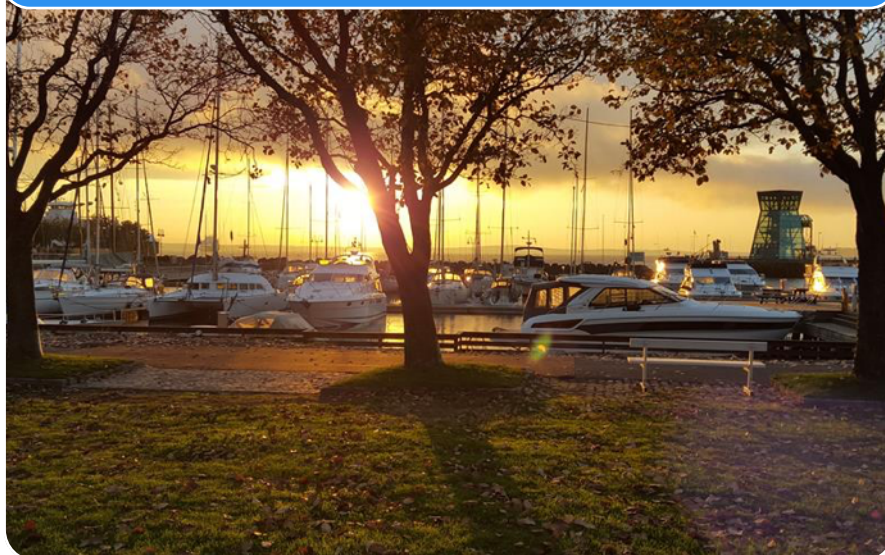
- Restaurants
- Shopping center
- Bank, Pharmacy
- beach



The guest harbor is centrally located in the middle of the canal in Moss. The channel separates the center from Jeløya. Moss Guest harbour has docks on both sides of the canal as well as its own floating dock on Tollbod Brygga which lies north / east of the canal bridge.

Horten

28



N59°25'0.1" E10°29'47.7"

- Restaurants
- Shopping center
- Bank, Pharmacy
- beach



Horten guest harbor has been the top 10 of Norway's best guest ports several times.

Evjesund

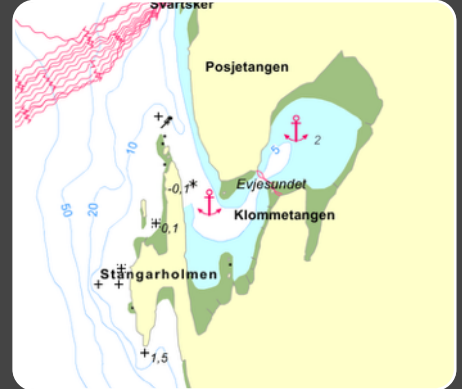
30



Evjesundet is a beautiful and gentle harbor. Inside the bay there are wetland areas, some habitation.

N59°21'21.6" E10°39'45.3"

- use anchor
- beach
- Wildlife



Bastøy

31



Bastøy Prison is a low-risk prison located on Bastøy in Oslofjorden. In 2007, Bastøy Prison became the world's first human ecological prison. Prison builds its values on three pillars: ecology, humanism and responsibility development. Bastøy, once called the devil island, was orphanage from 1900 to 1970. A place where poor and neglected children were sent to. Bastøy was notorious for his hard physical punishments, which also enabled whipping. The children's age was from 8 to 21 years.

N59°23'22.6" E10°31'40.8"

- use anchor
- beach
- Visit the Prison Island



Eldøy

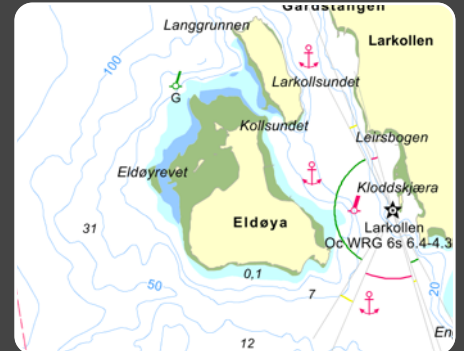
32



Eldøya is one of the two islands just west of the town of Larkollen in Rygge municipality. Together with the island of Kollen, Eldøya forms a protected waters, and this made the early sailing season Larkollen a widely used port.

N59°19'38.2" E10°39'16.2"

- use anchor
- beach
- Wildlife



Holmestrand

33



Holmestrand, "The city under the mountain". The city was a natural harbor by the Oslo Fjord, where the Dutch gathered timber already from around 1550. In 1752 Holmestrand became city privileges and became the city of purchase.

N59°29'28.7" E10°19'7.5"

- Restaurants
- Shopping center
- Bank, Pharmacy
- beach



Kommersøya/Bjerkøya 34-36



The island is limestone which causes more rare plants to grow here. You can find remains for the stone industry and an old farm, you can find fossils here are great hiking trails. Parts of the island are nature reserves.

Bjerkøya is a resident island in Sande Municipality in Vestfold. Bjerkøya is located in the outskirts of Sandebukten. There is a bridge from the mainland to the island.

N59°31'43.5" E10°19'16.1"

- anchor - peer
- beach
- Wildlife



Losna CHARTER



Losna CHARTER

Ballblomvegen 6b
2150 Aarnes



POWERED BY NATURE

